

Silicon NPN Darlington Power Transistor

BDW73/A/B/C/D

DESCRIPTION

- Collector Current $I_C = 8A$
- High DC Current Gain $h_{FE} = 750(\text{Min.}) @ I_C = 3A$
- Complement to Type BDW74/A/B/C/D

APPLICATIONS

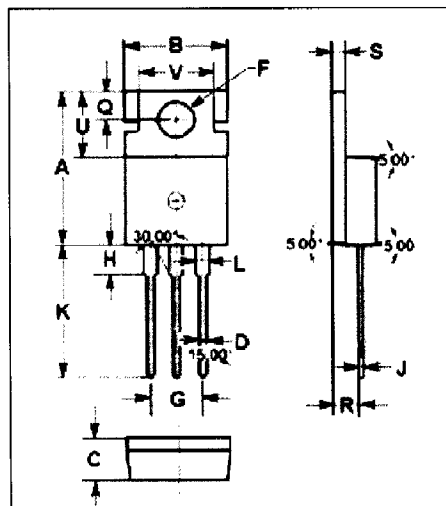
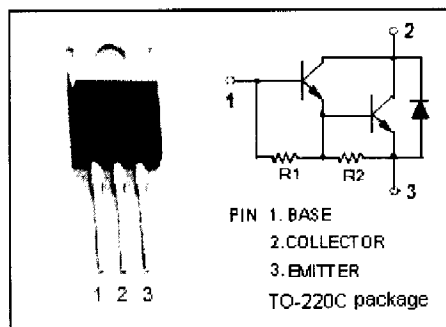
- Designed for audio output stages and general amplifier and switching applications

ABSOLUTE MAXIMUM RATINGS ($T_a = 25^\circ C$)

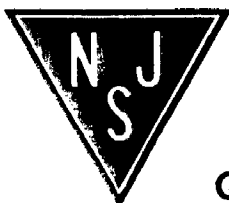
SYMBOL	PARAMETER	VALUE	UNIT	
V_{CBO}	Collector-Base Voltage	BDW73	45	V
		BDW73A	60	
		BDW73B	80	
		BDW73C	100	
		BDW73D	120	
V_{CEO}	Collector-Emitter Voltage	BDW73	45	V
		BDW73A	60	
		BDW73B	80	
		BDW73C	100	
		BDW73D	120	
V_{EBO}	Emitter-Base Voltage	5	V	
I_C	Collector Current-Continuous	8	A	
I_B	Base Current-Continuous	0.3	A	
P_C	Collector Power Dissipation @ $T_a = 25^\circ C$	2	W	
	Collector Power Dissipation @ $T_c = 25^\circ C$	80		
T_J	Junction Temperature	150	$^\circ C$	
T_{stg}	Storage Temperature Range	-65~150	$^\circ C$	

THERMAL CHARACTERISTICS

SYMBOL	PARAMETER	MAX	UNIT
$R_{th\ j-c}$	Thermal Resistance, Junction to Case	1.56	$^\circ C/W$
$R_{th\ j-c}$	Thermal Resistance, Junction to Case	62.5	$^\circ C/W$



DIM	mm	
	MIN	MAX
A	15.70	15.90
B	9.90	10.10
C	4.20	4.40
D	0.70	0.90
F	3.40	3.60
G	4.98	5.18
H	2.70	2.90
J	0.44	0.46
K	13.20	13.40
L	1.10	1.30
Q	2.70	2.90
R	2.50	2.70
S	1.29	1.31
U	6.45	6.65
V	8.66	8.86



Silicon NPN Darlington Power Transistor

BDW73/A/B/C/D

ELECTRICAL CHARACTERISTICS

$T_c=25^\circ\text{C}$ unless otherwise specified

SYMBOL	PARAMETER	CONDITIONS	MIN	TYP.	MAX	UNIT	
$V_{(BR)CEO}$	Collector-Emitter Breakdown Voltage	BDW73	$I_C=30\text{mA}; I_B=0$			45	
		BDW73A				60	
		BDW73B				80	
		BDW73C				100	
		BDW73D				120	
$V_{CE(sat)-1}$	Collector-Emitter Saturation Voltage	$I_C=3\text{A}; I_B=12\text{mA}$			2.5	V	
$V_{CE(sat)-2}$	Collector-Emitter Saturation Voltage	$I_C=8\text{A}; I_B=80\text{mA}$			4.0	V	
$V_{BE(on)}$	Base-Emitter On Voltage	$I_C=3\text{A}; V_{CE}=3\text{V}$			2.5	V	
V_{ECF}	C-E Diode Forward Voltage	$I_F=8\text{A}$			3.5	V	
I_{CEO}	Collector Cutoff Current	BDW73	$V_{CE}=30\text{V}; I_B=0$		0.5	mA	
		BDW73A					$V_{CE}=30\text{V}; I_B=0$
		BDW73B					$V_{CE}=40\text{V}; I_B=0$
		BDW73C					$V_{CE}=50\text{V}; I_B=0$
		BDW73D					$V_{CE}=60\text{V}; I_B=0$
I_{CBO}	Collector Cutoff Current	BDW73	$V_{CE}=45\text{V}; I_E=0$ $V_{CB}=45\text{V}; I_E=0; T_J=150^\circ\text{C}$		0.2 5.0	mA	
		BDW73A					$V_{CB}=60\text{V}; I_E=0$ $V_{CB}=60\text{V}; I_E=0; T_J=150^\circ\text{C}$
		BDW73B					$V_{CB}=80\text{V}; I_E=0$ $V_{CB}=80\text{V}; I_E=0; T_J=150^\circ\text{C}$
		BDW73C					$V_{CB}=100\text{V}; I_E=0$ $V_{CB}=100\text{V}; I_E=0; T_J=150^\circ\text{C}$
		BDW73D					$V_{CB}=120\text{V}; I_E=0$ $V_{CB}=120\text{V}; I_E=0; T_J=150^\circ\text{C}$
I_{EBO}	Emitter Cutoff Current	$V_{EB}=5\text{V}; I_C=0$			2.0	mA	
h_{FE-1}	DC Current Gain	$I_C=3\text{A}; V_{CE}=3\text{V}$	750		20000		
h_{FE-2}	DC Current Gain	$I_C=8\text{A}; V_{CE}=3\text{V}$	100				
Switching times							
t_{on}	Turn-on Time	$I_C=3\text{A}; I_{B1}=-I_{B2}=12\text{mA};$ $V_{BE(off)}=-3.5\text{V}, R_L=10\Omega$		1.0		μs	
t_{off}	Turn-off Time			5.0		μs	